

Horizon

Established 1902
Northern
machine works
CRF-362

CREASING AND FOLDING

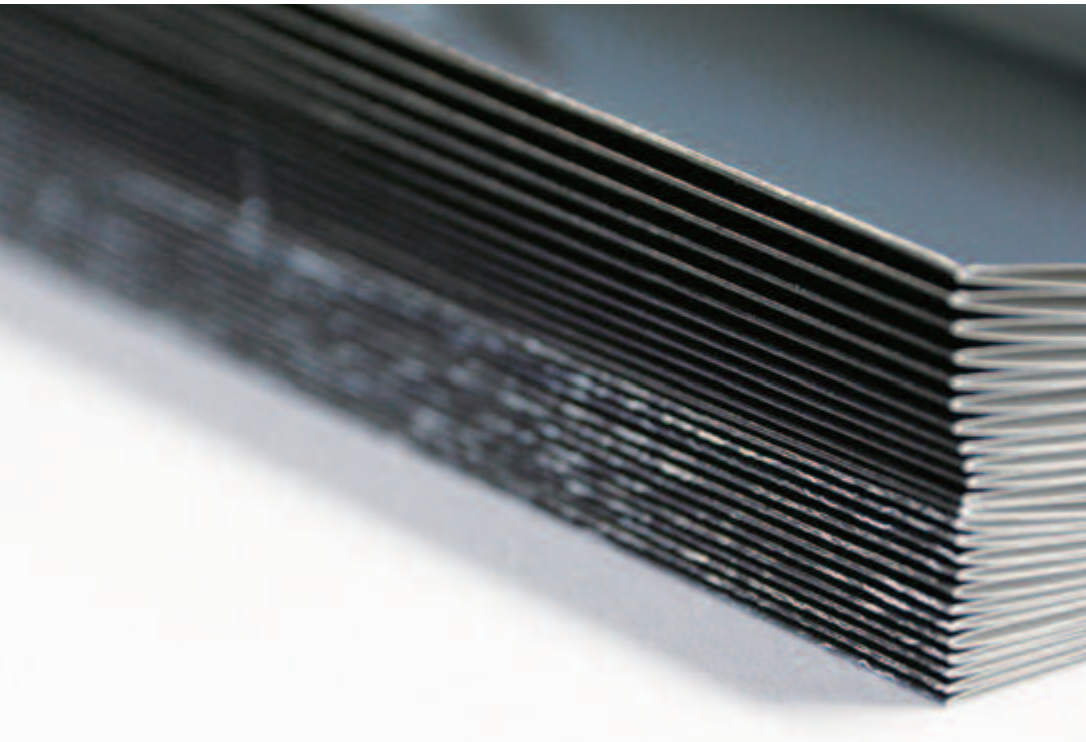
CRF-362

Creasing and folding
in one pass.



CREASING AND FOLDING FOR HEAVIER SHEETS IN ONE PASS.

Avoid cracking of digitally-printed stocks.



BENEFIT

APPLICATION FLEXIBILITY

Suitable for creasing covers, restaurant menus, shop cards, invitation cards and laminated sheets. The impact creaser avoids cracking on digitally-printed applications.

PERFECT BOOK COVERS

High quality creasing helps to prepare high quality perfect bound book covers. Spine, hinge and flap creases can be properly produced by selecting up or down creasing.

HIGH QUALITY

Two fold knives are equipped for high quality folding, even on heavy stocks. 6 different folding patterns can be set up simply by using the icon based touch screen.

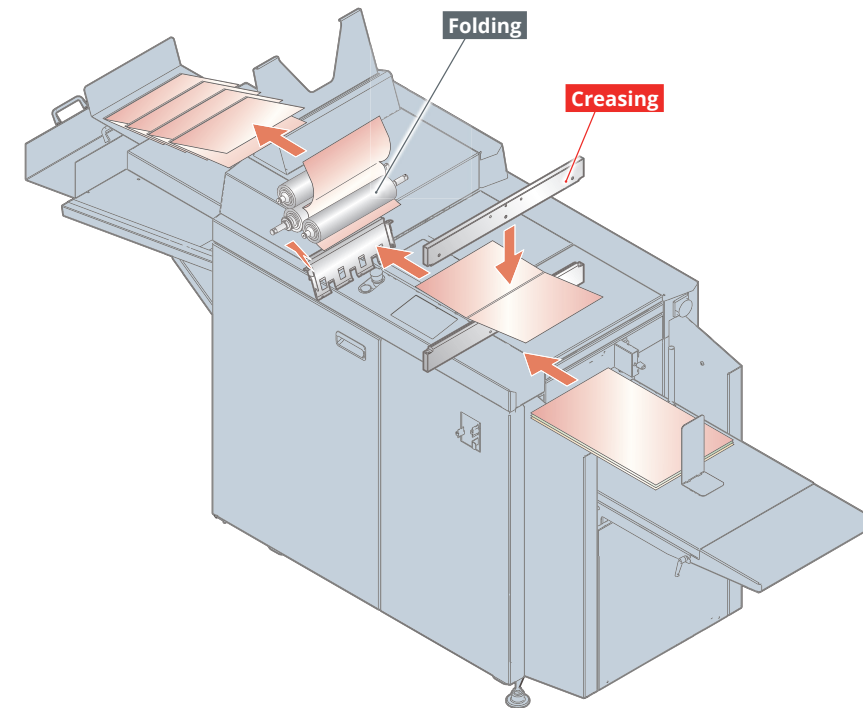
USER-FRIENDLY OPERATION

Quick and easy set-up and operation can be performed through the newly equipped high resolution color touch screen.

MANAGE YOUR BINDERY WITH PXNET

The folder can be enhanced with JDF workflow from upstream to the postpress using pXnet bindery control system.

SHEET FLOW



Creasing

There are three types of the creasing; only creasing, creasing on covers for binding and creasing for folding. Perforation can be also made using the optional PRF-36 Impact Perforation Unit.

■ Only Creasing



■ Creasing on Covers for Perfect Binding (Creasing Patterns)



One Line
(For a thin book)



Two Lines
(Spine Only)



Four Lines
(Spine and Hinge)



Five Lines with Flap
(Spine, Hinge and Flap)



Five Lines with Flap
(Spine, Hinge and Flap)



Six Lines with Double Flap
(Spine, Hinge and Double Flaps)

Folding

After the creasing, the sheets are folded in the following fold patterns.



Parallel Fold



Accordion Fold



Short Fold



Letter Fold



Double Parallel Fold



Open Gate Fold



Open Gate Fold
(with creasing line)

DETAILS FOR EACH DEVICE.



1 TOUCH PANEL



Newly equipped high resolution touchscreen provides intuitive operation. Changeovers including fold pattern, creasing number and up / down crease selection can be done easily at this screen. Up to 200 jobs can be stored in memory for easy recall.

2 RELIABLE SHEET FEEDING

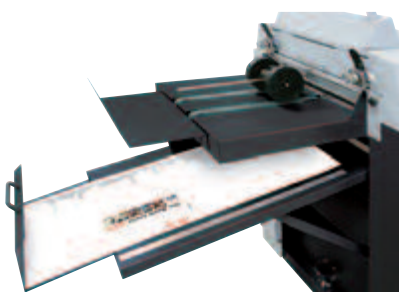


Uniquely designed suction belt feeding system enables stable feeding performance even with heavier sheets. An ultrasonic sensor ensures miss or double detection regardless of the print image or thickness of sheets.

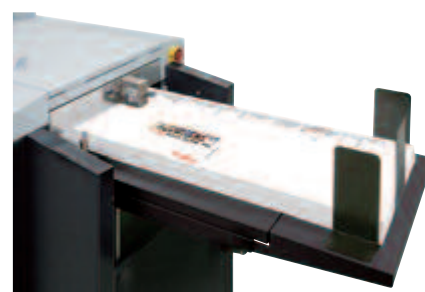
3 SHEET REGISTRATION



Sheets align to the register guide to ensure straight feeding for accurate creasing and folding. Sheet skew can be adjusted by changing the transport roller pressure on the registration guide.



- When operated without folding, the creaser can process 400 gsm for heavier stocks. (The stopper for long sheets is necessary.)



- The support table for longer sheets is used when the sheet length is 650 mm / 25.5" or longer. The maximum sheet length which can be loaded is 865 mm / 34.0".

4 QUALITY CREASING



Up to 10 creasing lines can be performed in one pass. Creasing depth can be adjusted. Up and down creasing are performed in one pass. Creasing positions can be adjusted in increments of 0.1 mm / 0.004"

5 WIDE VARIETY OF FOLDING



The large-diameter fold rollers are equipped for heavier stocks. Folding patterns include parallel fold, short fold, letter fold, double parallel fold, accordion fold, and open gate fold.

6 DUAL DELIVERY



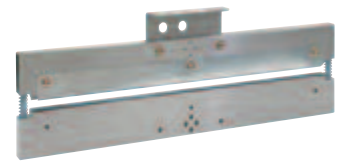
Folded jobs are delivered to the upper conveyor and neatly stacked for easy job handling. Flat creased jobs are delivered to the lower tray.

OPTIONS.

CREASING UNIT

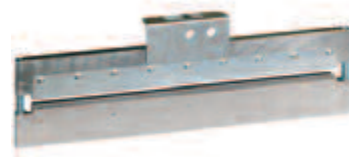
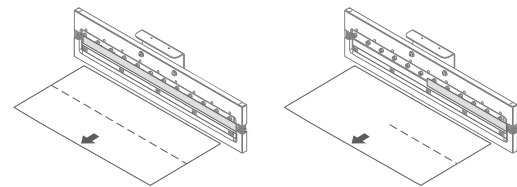
Creasing units for different widths of creasing lines are available. The following creasing units are available as options:

- Positive creasing unit for 0.5 mm / 0.020" (thin)
- Positive and negative creasing units for 2.0 mm / 0.079" (thick)



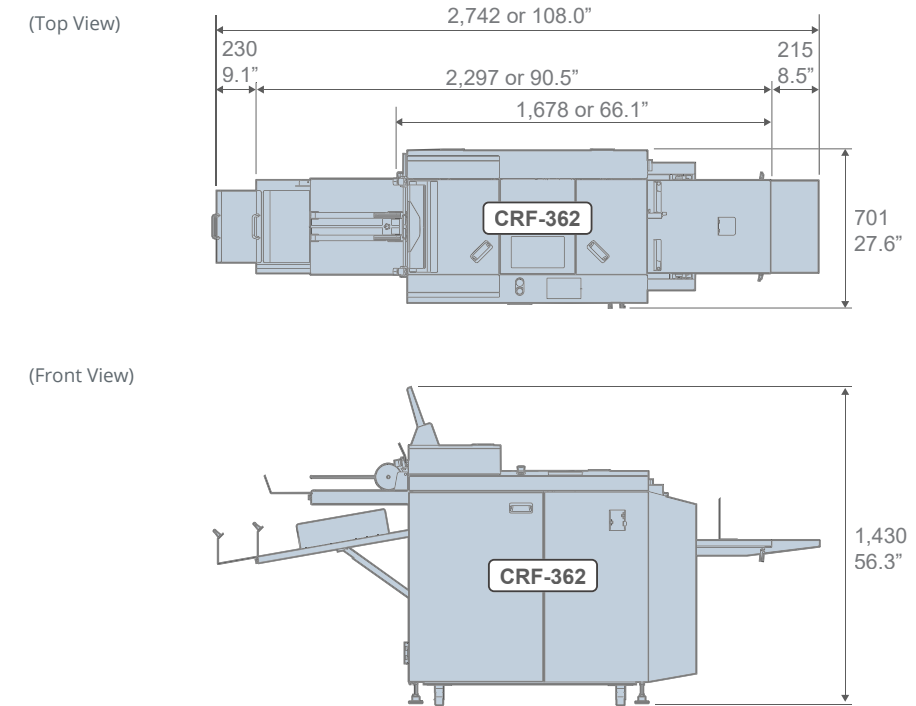
PRF-36 IMPACT PERFORATION UNIT

First creasing unit can be replaced with the impact perforating unit to make the perforation vertically to the transport direction.



SPECIFICATIONS.

Machine Dimensions. (Unit: mm or inch)



CRF-362	
Installation Type	Floor Model
Sheet Feeding System	Air Suction Feed Belt
Sheet Size	<p>Width x Length Max. 364 x 865 mm or 14.330" x 34.055" Min. 105 x 180 mm or 4.134" x 7.087" However, the sheet length is limited depending on the fold pattern.</p> <p>Parallel Fold: L 180 to 865 mm or 7.087" to 34.055"</p> <p>Letter Fold: L 276 to 650 mm or 10.867" to 25.590"</p> <p>Accordion Fold: L 276 to 650 mm or 10.867" to 25.590"</p> <p>Short Fold: L 420 to 431.8 mm or 16.536" to 17.0"</p> <p>Double Parallel Fold: L 276 to 865 mm or 10.867" to 34.055"</p> <p>Open Gate Fold: L 276 to 865 mm or 10.867" to 34.055"</p> <p>Single Flap: L 347 to 865 mm or 13.662" to 34.055" However, the distance between the end of the flap and the folding line should be 69 mm (2.717") or longer.</p> <p>Double Flaps: L 416 to 865 mm or 16.378" to 34.055" However, the distance between the end of the flap and the folding lines should be 69 mm (2.717") or longer. Also, the distance shown below should be 255 mm (10.039") or shorter.</p>
	<p>69 mm (2.717") or longer</p> <p>69 mm (2.717") or longer</p> <p>255 mm (10.039") or shorter</p>

Sheet Weight Range	Normal Paper: 80 to 350 gsm (with Folding) 80 to 400 gsm (without Folding)
	Coated Paper (Gloss, Matte): 105 to 350 gsm (with Folding) 105 to 400 gsm (without Folding)
Feeder Stack Height	Laminated Paper: 0.2 to 0.4 mm or 0.0079" to 0.0157" (with Folding) 0.2 to 0.5 mm or 0.0079" to 0.0196" (without Folding)
	Max. 150 mm or 5.90"
Impact Creasing Mechanism	One set of positive and negative
Number of Impact Crease Lines	Max. 10 Creasing Lines
Production Speed	4,500 sheets per hour (A4 / one creasing line and fold)
Voltage / Frequency	Single Phase 200 to 240 V, 50 or 60 Hz Single Phase 208 V, 60 Hz (Only for the United States)
Rated Current	Single Phase 200 to 240 V, 50 or 60 Hz, 6.0 A
Machine Dimensions	W2,742 x D701 x H1,430 mm or W108.0" x D27.6" x H56.3"
Machine Weight	345 kg or 760.0 lb

*The machine design and specifications are subject to change without any notice.



215-425-0300

MORE AT
HORIZON.CO.JP



Horizon

Horizon International, Inc.

510 Kuze Ooyabu-cho, Minami-ku,
Kyoto, 601-8206, Japan
Phone : +81-75-934-6700
Fax : +81-75-934-6708
www.horizon.co.jp

Distributed by

 **STANDARD**

Standard Finishing Systems

10 Connector Road, Andover,
MA 01810
Phone : 877-404-4460 / 978-470-1920
Fax : 978-470-2771
www.standardfinishing.com