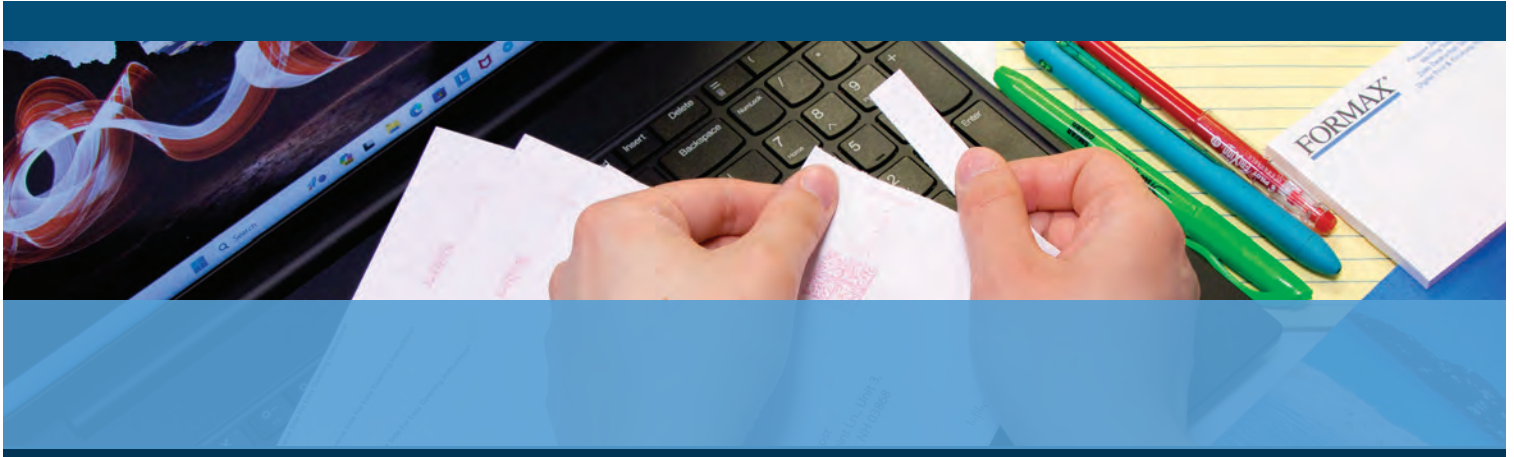


# AutoSeal® FD 1406

LOW-VOLUME PRESSURE SEALER



- Color touchscreen control panel
- Drop-in feed system
- Six-digit resettable counter
- Processes up to 73 forms per minute
- Handles forms up to 14" long

## FORMAX®

[www.formax.com](http://www.formax.com)



960 Brook Road, Unit 3  
Conshohocken, PA 19428  
(215) 425-0300

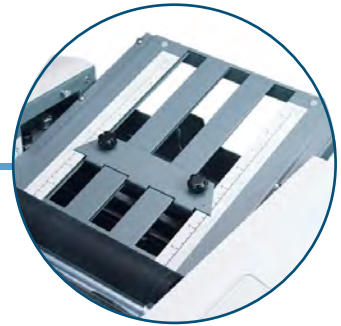
The **FD 1406 AutoSeal®** is a user-friendly low-volume solution for processing pressure sensitive mailers, frequently used for applications that can be printed on one sheet, including checks, invoices, school reports, and tax forms. It processes a variety of forms, **up to 14" in length**, at speeds of **up to 73 forms per minute**. Standard features include a **graphics-based color touchscreen, drop-in top feed system, adjustable catch tray**, and **clearly marked fold plates** that can be set for custom folds. Fold types include Z, C, Uneven Z and C, Half and custom. The FD 1406 is proudly **built in the USA** with proven Formax technology, and is ideal for any church, school, or small business looking to utilize the convenience of pressure seal forms.



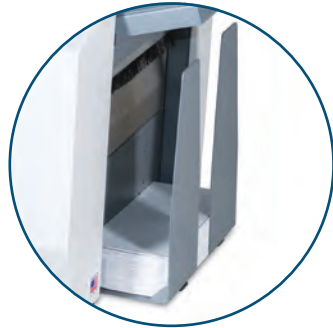
**Color Touchscreen Control Panel**  
Graphics-based and designed for easy, walk-up use



**Drop-In Feeding System**  
Produces dependable feeding of forms without paper fanning



**Clearly Marked Fold Plates**  
Marked with five of the most popular folds



**Adjustable Catch Tray**  
Accommodates any fold type, stacks forms neatly and sequentially



**Compatible with Various Forms**  
Processes forms up to 14" long, in Z, C, Uneven Z/C, Half & Custom folds

## STANDARD FEATURES

- Color touchscreen control panel
- Compact desktop design
- Drop-in top feed system
- 14" form length capability
- Processes up to 73 forms per minute
- Z, C, uneven Z and C, half and custom folds
- Hopper holds up to 160 forms
- Easy-to-adjust pre-marked fold plates
- Six-digit resettable counter
- Adjustable catch tray
- Adjustable infeed side guides

## OPTIONS

- Locking cabinet with casters
- 402 Series Jogger

## WARRANTY SUPPORT

The FD 1406 comes with a 90-day factory-direct warranty\* that includes phone support and depot service.

The following optional on-site services are also available:

\* On-site installation and training only (one visit), by our local provider

\* Service Contract providing preventive maintenance and on-site support after the 90-day warranty. (On-site installation and training not included with service contract but available separately.)

## SPECIFICATIONS

Hopper Capacity	Up to 160 forms 20#
Fixed Speed	Up to 73 forms per minute, based on 11" Z fold
Paper Size**	Up to 8.5" W x 14" L (216 x 356mm)
Monthly Duty Cycle	Up to 30,000/month
Dimensions	24" L x 17" W x 13" H (610 x 432 x 330mm)
Weight	81 lbs (37kg)
Power	120 Volts AC 50/60Hz
Certifications	UL, CE, and CUL Approved
Made in USA	

U.S. Patents 5,772,841 5,865,925 5,968,308 6,264,592

\*90-day factory warranty begins at time of shipment to customers

\*\* Will not process 14" uneven "o" forms. Will not process 14" uneven "Z" forms with an address panel less than 3 inches long.