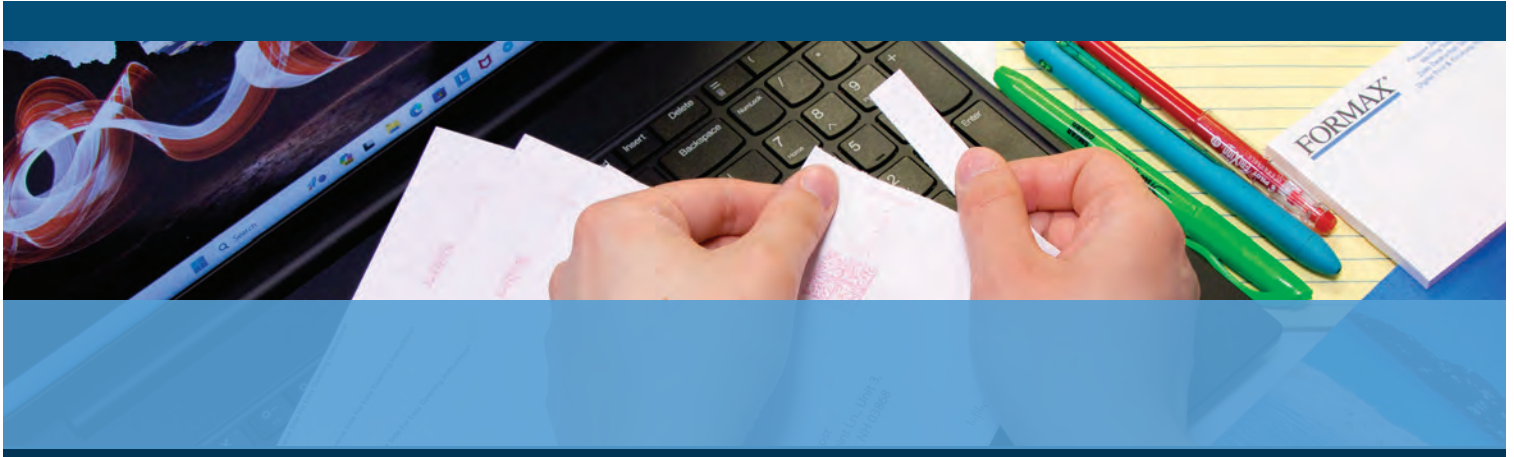


# AutoSeal® FD 1506

MID-VOLUME PRESSURE SEALER



- Color touchscreen control panel
- Drop-in feed system
- Six-digit resettable counter
- Processes up to 100 forms per minute
- Handles forms up to 14" long

## FORMAX®

[www.formax.com](http://www.formax.com)



960 Brook Road, Unit 3  
Conshohocken, PA 19428  
(215) 425-0300

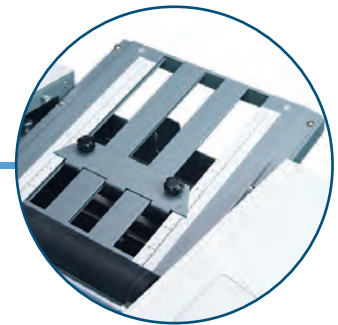
The **FD 1506 AutoSeal®** is a user-friendly mid-volume solution for processing pressure sensitive mailers, frequently used for applications that can be printed on one sheet, including checks, invoices, school reports, and tax forms. It processes a variety of forms, **up to 14" in length**, at speeds of **up to 100 forms per minute**. Standard features include a **graphics-based color touchscreen**, **drop-in top feed system**, **adjustable catch tray**, and **clearly marked fold plates** that can be set for custom folds. Fold types include Z, C, Uneven Z and C, Half and custom. The FD 1506 is proudly **built in the USA** with proven Formax technology, and is ideal for any church, school, or small business looking to utilize the convenience of pressure seal forms.



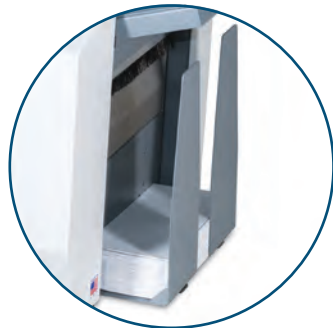
*Color Touchscreen Control Panel*  
Graphics-based and designed for easy, walk-up use



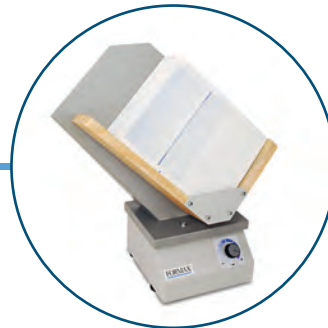
*Drop-In Feeding System*  
Produces dependable feeding of forms without paper fanning



*Clearly Marked Fold Plates*  
Marked with five of the most popular folds



*Adjustable Catch Tray*  
Accommodates any fold type, stacks forms neatly and sequentially



*Optional 402 Series Jogger*  
Reduces static electricity from forms and aligns them for proper feeding

## STANDARD FEATURES

- Color touchscreen control panel
- Compact desktop design
- Drop-in top feed system
- 14" form length capability
- Processes up to 100 forms per minute
- Z, C, uneven Z and C, half and custom folds
- Hopper holds up to 200 forms
- Easy-adjusted pre-marked fold plates
- Six-digit resettable counter
- Adjustable catch tray
- Adjustable infeed side guides

## OPTIONS

- 18" Conveyor with photo eye
- Reverse Stacking Conveyor: Allows for A-to-Z input and A-to-Z output
- Locking Cabinet with casters
- 402 Series Jogger

## SPECIFICATIONS

Hopper Capacity	Up to 200 forms 20#
Fixed Speed	Up to 100 forms per minute, based on 11" Z fold
Paper Size	Up to 8.5" W x 14" L (216 x 356mm)
Fold Types	Z, C, Uneven Z and C, Half, Custom
Monthly Duty Cycle	Up to 35,000/month
Dimensions	24" L x 17" W x 13" H (610 x 432 x 330mm)
Weight	81 lbs (37kg)
Power	FD Model: 120 Volts AC 50/60Hz FE Model: 220 Volts AC 50/60Hz
Document Sequence	Standard sequence is A-to-Z input, Z-to-A output
Certifications	UL, CE, and CUL Approved
Made in USA	
U.S. Patents 5,772,841 5,865,925 5,968,308 6,264,592	