

C941e

OKI[®]



An LED Device with 5+ Color Capability –
Built on a Multimedia Production Platform

Established 1902
Northern
MACHINE WORKS



Introducing the C941e from OKI®: a 5-station color LED device, with breathtaking output, stunning detail and production speed.

C941e Highlights:

Prints with CMYK plus White or Clear toner

Print speed up to 50 ppm Color and Mono¹

True 1200 x 1200 dpi resolution

High-capacity toner: up to 38,000 pages²

Prints on a wide range of media, including envelopes, magnetic media, polyester, transparent film, and heavy stock up to 360 gsm

Handles 3" x 5" cards to 52" banners

Supports tabloid extra (12" x 18") and Super-B (13" x 19")

2 GB memory, 1 Gigabit network and duplex (2-sided printing) standard

Easy front access to toner cartridges and image drums

High-resolution color LCD display panel with alphanumeric keypad

Low total cost of ownership (TCO)

Paper capacity expandable to 2,950 sheets

Optional external RIP: EFI® XF Server or Harlequin® MultiRIP™ 10

1-Year On-Site warranty³

Toll-free technical assistance 24/7/365³

The device you've dreamed of

Here is the ideal production device for creative, opportunity-seeking Design Firms, Specialty Print Shops, even large Retailers: the C941e from OKI—a fast, flexible, affordable, easy-to-use 5-station color LED device built on a true multimedia production platform.

Think outside the CMYK box

Now you can demonstrate your creativity or broaden your printed offerings by producing materials on an incredible range of media in CMYK *plus* solid White or Clear gloss toners.

With the C941e, these processes—which used to require expensive printing equipment and outside resources—are available *in-house and on demand*.

The C941e gives you the ability to create breathtaking mock-ups, stationery, invitations, brochures, packaging prototypes, point-of-sale material, window graphics, labels and more. It applies White toner to colored or translucent media, and uses Clear toner to produce watermarks and artistic embellishments that really stand out!

Advantage: yours

The C941e lets you extend your in-house printing and presentation capabilities from the expected to the extraordinary.

This affordable printing device, with its ease of use and low total cost of ownership, enables you to produce stunning documents, offer new services, be competitive, and grow your business.

Print CMYK plus White toner or Clear gloss toner on a wide variety of media and substrates—to stunning effect!



Results that transcend expectations: versatile, easy-to-use, graphics-oriented and priced for in-house applications.

Built on a true multimedia production platform:

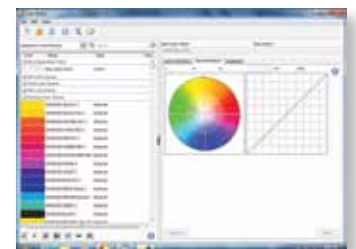
- **Multimedia** The C941e easily handles 360 gsm extra-thick card stock, polyester, magnetic media, transparency films and much more—in sizes ranging from 3" x 5" index cards to 13" x 52" banners.
- **Production** The C941e enables users to produce striking comps, one-offs and reprints at up to 50 ppm¹—and can apply white text and graphics to colored media, and clear toner selectively on a design, with eye-catching results.
- **Platform** The C941e is aligned with the direction of today's print production marketplace: short-run capacities, fast print speed and stunning output—with support for future features and services.

Optional RIP ensures color accuracy and streamlines color management

Equipped with the optional external RIP, the C941e can take advantage of faster job processing, industry standard color management and structured job submission for consistent, predictable results:

- **The optional EFI® XF Server** offers fast, precise color reproduction and flexible job management. Administrator-managed workflows are ideal for supporting a team of users that desires consistent results. The XF Server includes EFI's spot color adjustment tools and hot folder job submission.
- **The optional Harlequin® MultiRIP™ 10 from Global Graphics®** is combined with Harlequin's DirectPrint™ to offer incredible job processing power and ease of use. See complex jobs rendered quickly and printed with consistent results. DirectPrint's PDF centric workflow simplifies job submission and setup. Built-in Harlequin Dispersed Screening (HDS) produces sharp details and high-fidelity color transitions.

PANTONE® libraries are included in both the EFI XF Server and Global Graphic's Harlequin MultiRIP 10. And, to ensure optimal performance, the optional RIP is pre-installed on a Windows® PC powered by an Intel® i7 8 Core processor and 8 GB of memory.



EFI XF Server



Harlequin MultiRIP 10

Real-time status and easy maintenance

Users can get an instant read on the C941e's status via the color LCD display, with its easy-to-read messaging and graphics. The alphanumeric keypad makes entering commands a snap. And the front-accessible compartment makes exchanging or replacing consumables quick and easy: it only takes a few minutes to switch the 5th station from White to Clear gloss toner—and back again.



Color LCD display shows current status of the printer; built-in toner gauge indicates the remaining life of each toner cartridge.



Front-accessible consumables make changing or replacing toner cartridges and image drums easy and quick.



Optional 2nd tray and high-capacity feeder (with casters) increase paper capacity to 2,950 sheets max.

C941e

Specifications

Performance		5-Color Digital LED
Print Speed ¹	CMYK/Mono	Up to 50 ppm Letter, 27 ppm Tabloid
	CMYK + White	Up to 45 ppm Letter, 24 ppm Tabloid
	CMYK + Clear	Up to 17 ppm Letter
Time to First Page ¹		Approx. 8 seconds
Duty Cycle		300,000 pages
Print Quality	Resolution	Up to 1200 x 1200 dpi; ProQ 1200 x 600 x 16 levels
Memory	RAM (Standard/Max)	2 GB
	Processor	1.2 GHz ARM CPU
Compatibility	Printer Languages	Adobe® PostScript® 3™, PCL® 6, PCL 5c, XPS®
	Connectivity	High-speed USB 2.0, 10 Base-T/100 Base-TX/1000 Base-T Ethernet
	Operating Systems	Windows® 8, Windows 7, Windows Vista®, Windows XP, Windows Server 2012, Windows Server 2008, Windows Server 2008 R2, Windows Server 2003; Mac® OS 10.3.9 – 10.9
	Network Protocols	TCP/IP, EtherTalk
Color Features/Solutions		Optional external PC-based RIP: Global Graphics® Harlequin® MultiRIP™ 10 or EFI® XF Server
		Standard Adobe PostScript 3 controller includes Trapping, ICC-based Color Management, Simulations for SWOP, ISO Coated, Japan Color; PDF Direct Print; PS Gamma Adjust; Color Correct
Print Management		Print Job Accounting; PrintSuperVision 4.0
Media Handling	Media Sizes	Tabloid extra (12" x 18"), tabloid (11" x 17"), legal, letter, executive, 3" x 5" index cards, A3, A4, A5, A6, B5, C5, DL, Com 10, Monarch envelopes, and banners (up to 13" x 52")
	Media Weight	Trays 1/2/3 and High-Capacity Feeder: 52–320 gsm; Multi-purpose Tray: 52–360 gsm
Media Capacity	Multi-purpose Tray (MPT)	Up to 300 sheets
	Trays 1/2/3	Up to 530 sheets
	High-Capacity Feeder	Up to 1,590 sheets
Max Capacity		Up to 2,950 sheets (w/ MPT, 2 Trays and High-Capacity Feeder)
Media Output		Face Down: max 610 sheets; Face Up: max 300 sheets
Environmental	Size (WxDxH)	27.5" x 24.6" x 25.2" (699 mm x 625 mm x 640 mm)
	Weight	244.4 lb. (110.8 kg) including consumables
	Temperature/Humidity	50°– 90°F (10°– 32°C) / 20% – 80%RH
	Power Consumption	Active: 1600W max. /1100W avg.; Standby: avg. 40W; PowerSave mode: 30W or less; Sleep mode: 4W or less; Auto Shutoff: 0.4W or less
	Noise Levels	Active: 57dBA or less; Standby: 34dBA or less; PowerSave mode: Inaudible
	ENERGY STAR® Compliance	Yes
Options	Accessory (Part Number)	530-Sheet 2nd/3rd Tray (45530702); High-Capacity Feeder w/ caster base (45530802); 530-Sheet Tray w/ Caster Base (45530902); Cabinet (70065701); 160 GB Hard Disk Drive (44622302) Harlequin MultiRIP 10 (70066201); EFI XF Server (45592302)
Warranty	Limited	1-Year On-Site ³ ; 5-Year Digital LED Printheads

Ordering Information

Product	Description	Part Number
C941e	5-Station Digital LED Printer	62445601 (120V, E/F/S/P)
Spot Color Kits	White Spot Color Kit	45531302
	Clear Spot Color Kit	45531402
		NOTE: Either a White or Clear kit must be purchased. Required for operation.
Toner Cartridges	38,000 pages ²	Cyan – 45536515; Magenta – 45536514; Yellow – 45536513; Black – 45536516
	10,000 pages ⁴	White – 45536405
	20,000 pages ⁴	Clear – 45536406
Image Drums	40,000 pages ⁵	Cyan – 45103727; Magenta – 45103726; Yellow – 45103725; Black – 45103728
	20,000 pages ⁵	White – 45103729; Clear – 45103730
Waste Toner Box	Approx. 40,000 pages ⁵	45531502
Fuser	Approx. 150,000 pages	45531112 (120V)
Transfer Belt	Approx. 150,000 pages	45531212

¹ Published performance results based on laboratory testing of letter-size sheets, simplex. Individual results may vary.

² Based on ISO/IEC 19798.

³ Available in the U.S. and Canada only.

⁴ Based on 5% coverage of letter-size sheet, simplex.

⁵ Based on 3 pages per job.

Specifications are subject to change without notice.



© 2015 Oki Data Americas, Inc. OKI Reg. T.M., M.D., Oki Electric Industry Co., Ltd. 5+ Color logo T.M., Oki Data Americas, Inc. Single Pass Color T.M., Oki Data Corp. PANTONE Reg. T.M., Pantone Inc. Harlequin Reg. T.M., Harlequin mark, MultiRIP T.M., Global Graphics Software Ltd. EFI Reg. T.M., EFI, Inc. Adobe, PostScript Reg. T.M., PostScript 3 T.M., Adobe Systems, Inc. PCL Reg. T.M., Hewlett-Packard Co. Windows, Windows Vista Reg. T.M., Microsoft Corp. XPS Reg. T.M., Dell, Inc. Mac Reg T.M., Apple Inc. ENERGY STAR Reg. T.M., US EPA.

Printed in the USA

MS16132-0215

2817 Cedar St. Philadelphia, PA 19134
(215) 425-0300
www.northernmachine.com