

Baumann-Perfecta BP92 High Speed Paper Cutter



* Image shows machine with smaller air side tables

- 36" Wide Format**
- Powerful Gearbox-Driven Knife**
- Hydraulic Clamping**
- 18.5" Color Touchscreen Controls**
- Stainless Steel Tables**
- Simple And Safe Blade Changes**

STANDARD FEATURES

Digital servo drive positioning system for the backgauge- *Lightning-fast backgauge speeds up to 12" per second and a settling accuracy of .0004".*

Programmable clamp pressure - *Pressure can automatically decrease as stacks reduce in size to avoid crushing.*

Slotless table - *Due to the side-mounted rigid backgauge - No slot belt to get caught up on or replace*

Cutting table and side tables with air bed

CIP3 / CIP4 enabled

LED table light and cut line indicator

Built-in knife hoist with setting gauges and knife guard

Self-monitoring safety light barrier/ Two-hand cut control

Complete rear table guarding

Overload protection device

Made in Germany by Perfecta

AVAILABLE OPTIONS

Enlarged air side tables

Narrow 1.85" false clamp for business cards

Carbide tipped blades

Lift kit for taller working height

Automatic Waste Removal System AWR

Smart clamp (limited clamping stroke)

Barcode scanner-Open programs by barcode

Swivel backgauge-Adjust backgauge in controls

Built-in knife cleaning device (for glued products)

Variable knife speed

S2C package (Straight To Cut), with bar code scanner and CIP3/4 network connectivity

Low pressure device (for corrugated and pressure sensitive material)



Blade changes are safe, quick and easy. This image shows the blade mounted in the protective guard after it was lowered by the knife hoist.

Baumann-Perfecta BP92 High Speed Paper Cutter

The TS Backgauge Controller

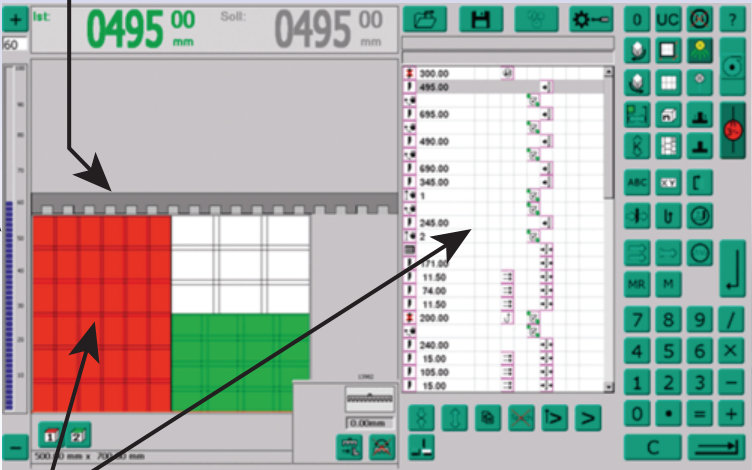
Three modes are standard on every system;
 1 - "O" Mode- Manual entry, then backgauge sends to your dimension.
 2 - UC Mode - Basic programming and automation. This is the most common mode for simple automated cutting programs.
 3 - TS Mode- Advanced controls with detailed visual instructions and diagrams. This mode is fantastic for environments that use several operators for standardized cutting templates and need the additional guidance between them. Or for shops who wish to utilize the many advanced features of the controller such as CIP 3/4 data, or for controlling peripheral equipment such as stack loaders, off-loaders, automatic waste removal, etc.

-Built-in help screens and manual. Knife change instructions with images.

-Programmable lift-rotating instructions for consistency and communication between operators

-Inch or metric dimensions

-Programmable clamp pressure with clamp pressure graphic shown on display



Clamp Pressure Gauge

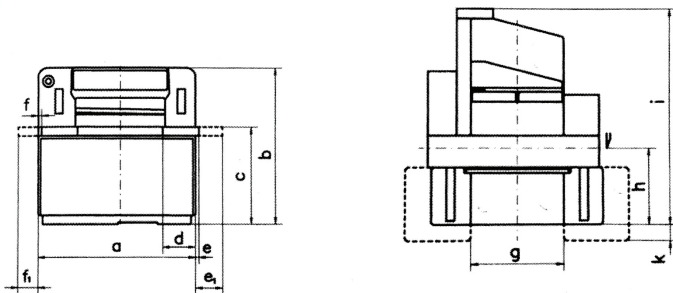
Animated backgauge position graphic

TS Mode shown below

Graphically-assisted, step-by-step program with stack rotation instructions, air-table control, comments and much more.

Cutting diagram and stack positioning instructions

Machine Dimensions



- a - 69.29"
- b - 57.48"
- c - 34.25"
- d - 11.81"
- e - 2.36"
- e1 - 9.06"
- f - 1.18"
- f1 - 10.24"
- g - 36.22"
- h - 28.94"
- i - 79.33"
- k - 11.42"

Specifications

Table Throat Width	36.2"
Max Stack Height	4.7"
Useful Rear Table Length	36.2"
Stainless Steel Air Side Tables	24.4" x 32.3"
Minimum Cut without False Clamp	0.7"
Minimum Cut with False Clamp	2.2" *Optional 1.85"
Clamping force	450 - 6745 lb.
Backgauge Speed	11.8" Per second
Knife Cycle Rate	50 Cuts/min.
Sound level as per EN 13023 dB (AS)	73 dB
Main Drive Power	4 hp
Electrical Requirements	220V 3ph 18A (25A Breaker)
Weight	4400 lbs