

Baumann-Perfecta BP115 High Speed Paper Cutter



45" Wide Format
Powerful Gearbox-Driven Knife
Hydraulic Clamping
18.5" Color Touchscreen Controls
Stainless Steel Tables
Simple And Safe Blade Changes

STANDARD FEATURES

Digital servo drive positioning system for the backgauge- Lightning-fast backgauge speeds up to 12" per second and a settling accuracy of .0004".

Programmable clamp pressure - Pressure can automatically decrease as stacks reduce in size to avoid crushing.

Slotless table - Due to the suspended backgauge design - No slot belt to get caught up on or replace

Cutting table and side tables with air bed

CIP3 / CIP4 enabled

LED table light and cut line indicator

Built-in knife hoist with setting gauges and knife guard

Self-monitoring safety light barrier/ Two-hand cut control

Complete rear table guarding

Overload protection device

Cut stick ejection lever

Tool Cabinet

Made in Germany by Perfecta

AVAILABLE OPTIONS

Enlarged air side tables

Narrow 1.85" false clamp for business cards

Carbide tipped blades

Lift kit for taller working height

Smart clamp (limited clamping stroke)

Automatic Waste Removal System AWR

Multi nozzle blow down device for AWR-system

Knife cleaning device-For glued products

Swivel backgauge

Swivel-tilt backgauge

Backgauge-mounted hold down

Built-in knife cleaning device (for glued products)

Variable-speed knife

Motorized knife adjustment

Extra-large clamp-Min. cut 1.77", max cutting depth 41.3"

Low pressure device (for corrugated and pressure sensitive material)

S2C package (Straight To Cut), with bar code scanner and CIP3/4 network connectivity



Blade changes are safe, quick and easy. This image shows the blade mounted in the protective guard after it was lowered by the knife hoist.



The backgauge is rigidly-mounted from above so there is no need for a slot in the table which permits smooth sliding of stacks. No table slot belt to get caught on like on other brands.

Baumann-Perfecta BP115 High Speed Paper Cutter

The TS Backgauge Controller

Three modes are standard on every system;
 1 - "O" Mode- Manual entry, then backgauge sends to your dimension.

2 - UC Mode - Basic programming and automation. This is the most common mode for simple automated cutting programs.

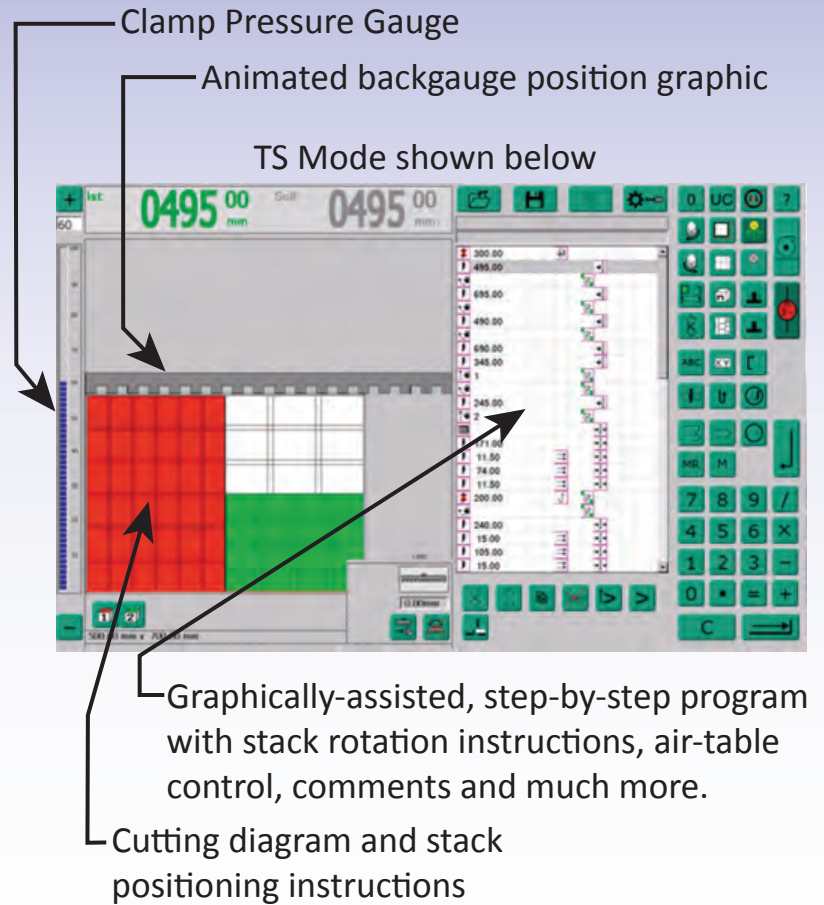
3 - TS Mode- Advanced controls with detailed visual instructions and diagrams. This mode is fantastic for environments that use several operators for standardized cutting templates and need the additional guidance between them. Or for shops who wish to utilize the many advanced features of the controller such as CIP 3/4 data, or for controlling peripheral equipment such as stack loaders, off-loaders, automatic waste removal, etc.

-Built-in help screens and manual. Knife change instructions with images.

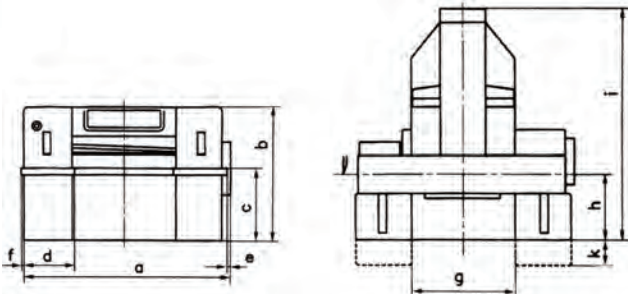
-Programmable lift-rotating instructions for consistency and communication between operators

-Inch or metric dimensions

-Programmable clamp pressure with clamp pressure graphic shown on display



Machine Dimensions



a - 96.06"
 b - 65.35"
 c - 34.25"
 d - 23.23"
 e - 3.15"

f - 1.18"
 g - 45.28"
 h - 29.53"
 i - 103.54"
 k - 11.42"

Specifications

Table Throat Width	45.27"
Max Stack Height	6.5"
Useful Rear Table Length	45.28"
Stainless Steel Air Side Tables	24.4 " x 32.3 "
Minimum Cut without False Clamp	0.78"
Minimum Cut with False Clamp	3.03" *Optional 1.85"
Clamping force	560 - 10115 lb.
Backgauge Speed	11.8" Per second
Knife Cycle Rate	44 Cuts/min.
Main Drive Power	5.36 hp
Electrical Requirements	220V/60hz 3ph 35A breaker
Weight	7050 lbs