

# Baumann-Perfecta BP132 High Speed Paper Cutter



**52" Wide Format**  
**Powerful Gearbox-Driven Knife**  
**Hydraulic Clamping**  
**18.5" Color Touchscreen Controls**  
**Stainless Steel Tables**  
**Simple And Safe Blade Changes**

## STANDARD FEATURES

**Digital servo drive positioning system for the backgauge**- *Lightning-fast backgauge speeds up to 12" per second and a settling accuracy of .0004".*

**Programmable clamp pressure** - *Pressure can automatically decrease as stacks reduce in size to avoid crushing.*

**Slotless table** - *Due to the suspended backgauge design - No slot belt to get caught up on or replace*

**Cutting table and side tables with air bed**

**CIP3 / CIP4 enabled**

**LED table light and cut line indicator**

**Built-in knife hoist with setting gauges and knife guard**

**Self-monitoring safety light barrier/ Two-hand cut control**

**Complete rear table guarding**

**Overload protection device**

**Cut stick ejection lever**

**Tool Cabinet**

**Made in Germany by Perfecta**

## AVAILABLE OPTIONS

**Enlarged air side tables**

**Narrow 1.85" false clamp for business cards**

**Carbide tipped blades**

**Lift kit for taller working height**

**Smart clamp (limited clamping stroke)**

**Automatic Waste Removal System AWR**

**Multi nozzle blow down device for AWR-system**

**Knife cleaning device-For glued products**

**Swivel backgauge**

**Swivel-tilt backgauge**

**Backgauge-mounted hold down**

**Built-in knife cleaning device (for glued products)**

**Variable-speed knife**

**Motorized knife adjustment**

**Rear table loading**

**Extra-large clamp-Min. cut 1.77", max cutting depth 41.3"**

**Low pressure device (for corrugated and pressure sensitive material)**

**S2C package (Straight To Cut), with bar code scanner and CIP3/4 network connectivity**



Blade changes are safe, quick and easy. This image shows the blade mounted in the protective guard after it was lowered by the knife hoist.



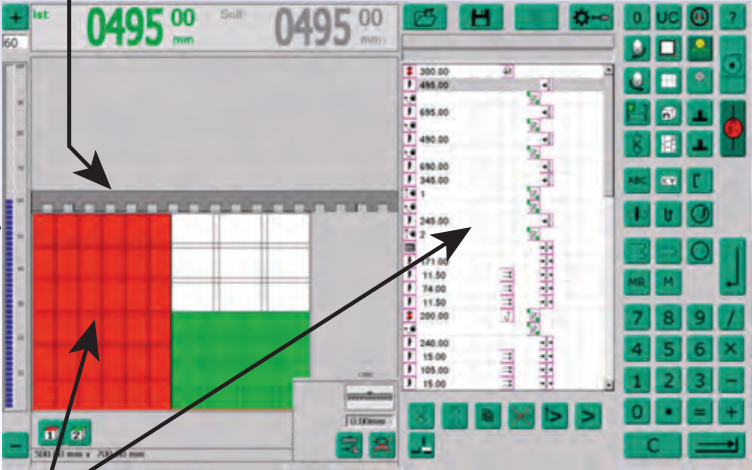
The backgauge is rigidly-mounted from above so there is no need for a slot in the table which permits smooth sliding of stacks. No table slot belt to get caught on like on other brands.

# Baumann-Perfecta BP132 High Speed Paper Cutter

## The TS Backgauge Controller

Three modes are standard on every system;  
 1 - "O" Mode- Manual entry, then backgauge sends to your dimension.  
 2 - UC Mode - Basic programming and automation. This is the most common mode for simple automated cutting programs.  
 3 - TS Mode- Advanced controls with detailed visual instructions and diagrams. This mode is fantastic for environments that use several operators for standardized cutting templates and need the additional guidance between them. Or for shops who wish to utilize the many advanced features of the controller such as CIP 3/4 data, or for controlling peripheral equipment such as stack loaders, off-loaders, automatic waste removal, etc.

- Built-in help screens and manual. Knife change instructions with images.
- Programmable lift-rotating instructions for consistency and communication between operators
- Inch or metric dimensions
- Programmable clamp pressure with clamp pressure graphic shown on display



Clamp Pressure Gauge

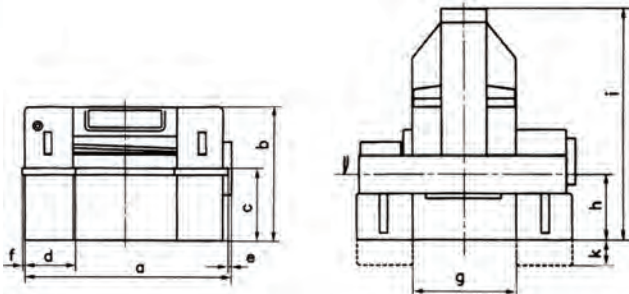
Animated backgauge position graphic

TS Mode shown below

Graphically-assisted, step-by-step program with stack rotation instructions, air-table control, comments and much more.

Cutting diagram and stack positioning instructions

## Machine Dimensions



a - 102.76"  
 b - 65.35"  
 c - 34.25"  
 d - 23.23"  
 e - 3.15"

f - 1.18"  
 g - 51.97"  
 h - 29.53"  
 i - 110.24"  
 k - 11.42"

## Specifications

Table Throat Width	51.97"
Max Stack Height	6.5"
Useful Rear Table Length	51.97"
Stainless Steel Air Side Tables	24.4 " x 32.3 "
Minimum Cut without False Clamp	0.78"
Minimum Cut with False Clamp	3.03" *Optional 1.85"
Clamping force	560 - 10115 lb.
Backgauge Speed	11.8" Per second
Knife Cycle Rate	44 Cuts/min.
Main Drive Power	5.36 hp
Electrical Requirements	220V/60hz 3ph 40A breaker
Weight	7550 lbs