

XANTÉ X-98™



Larger 55"x98" Full Bleed!

**CAN FIT THROUGH
ANY DOORWAY!**



PRINT ON VIRTUALLY ANY MEDIA!

CMYK + WWW

UP TO 2880 DPI RESOLUTION

PHOTO-REALISTIC COLOR

12-UP SIGN PRODUCTION

PRINT ON MEDIA UP TO 3 INCHES TALL

POWERFUL DUAL LED LAMPS

(Instant Ink Curing)



Ultra-Wide Gamut Eco-UV Inks



Northern
machine works
Established 1902

**Contact us for more information:
215-425-0300**

BEST. EVER.

The Most Versatile ECO-UV Printer

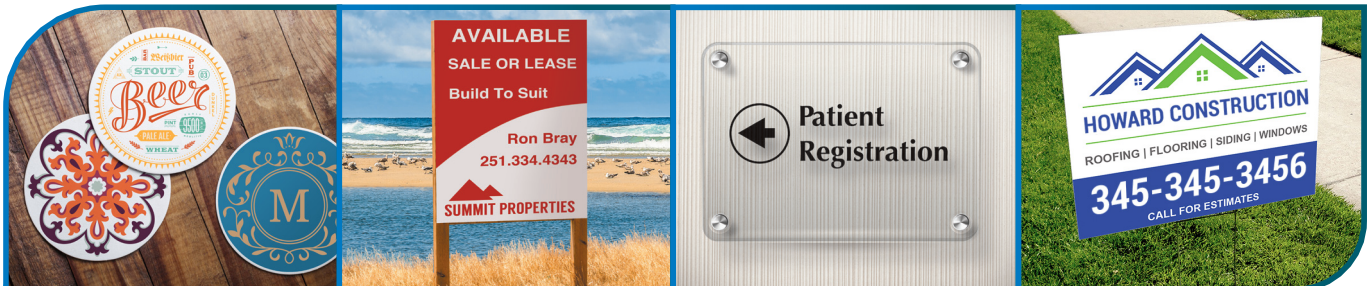
Designed for high-volume, large sign production, the X-98 does not sacrifice. Whether it's long-life outdoor signage or indoor photo-realistic UV prints, the X-98 can do it all. The 55"x98" full bleed bed is large enough to handle your biggest jobs, and small enough to fit in your shop.



Large flatbed printers print at high speeds, but are limited by substrate thickness. Small format printers print specialty items at slower speeds and are limited by substrate length and width.

The Xanté family of X-UV Printers do BOTH.
It's the best of both worlds.

Signage ■ Manufacturing ■ Specialty Items ■ Industrial



Optional Roll-fed Attachment and Cutter



The 48-in. roll-fed attachment and multi-use cutter for X-55 and X-98 UV flatbed printers adds greater capability and flexibility to your UV flatbed. Take advantage of the flatbed design to cut a variety of media, including vinyl, acrylic, paper, and more.

Increase your ROI, become more efficient and serve creative new market trends.



**Contact us for more information:
215-425-0300**

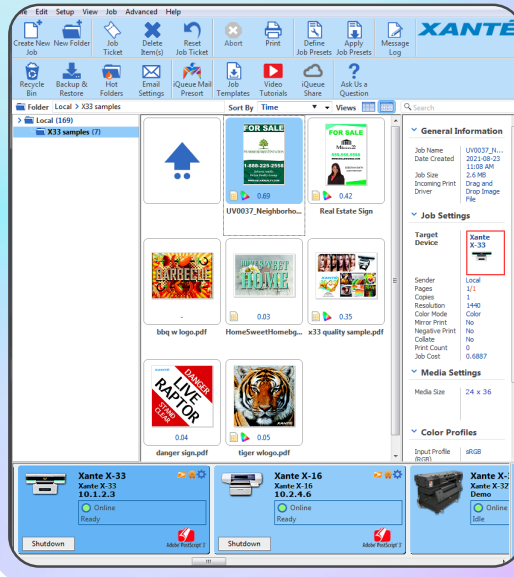
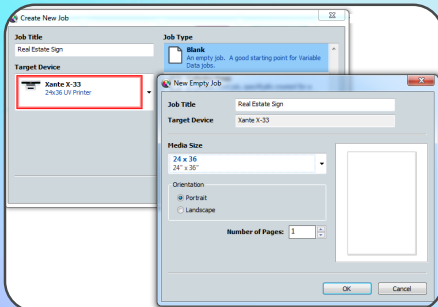


Simply Brilliant Color Workflow

Welcome to iQueue Prepress Software

Xante builds on its innovative workflow software with powerful team-based productivity in iQueue 14. True server-client operation enhances your workflow to optimize the talents and time of everyone involved in production. Take advantage of your entire team of IT

Create a new job or simply drag and drop your file into the queue.



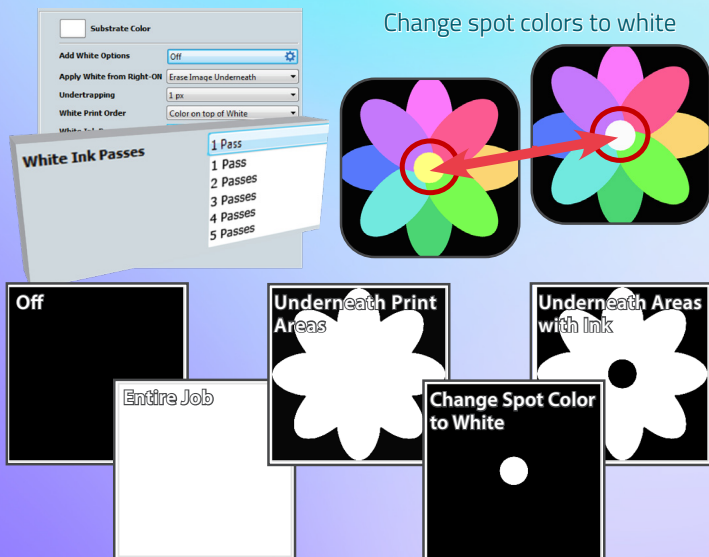
iQueue features include:

- Fully Independent CMYK Controls
- PANTONE® Color Library
- Right-ON® Spot Color Matching
- Full Imposition and Tiling
- QR Code Generator
- PDF-Out AND SO MUCH MORE!

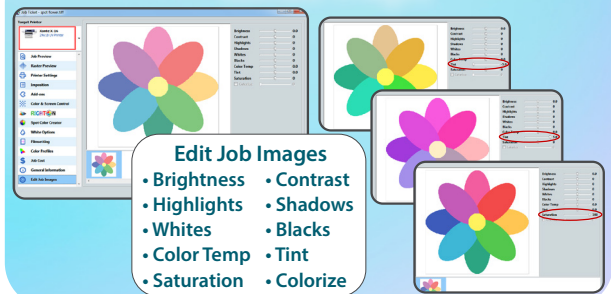
specialists, designers, and printer operators to simplify prepress tasks such as job sharing and job cost estimating, file editing tools, patented Right-ON® Spot Color Matching and much more. Create attention-grabbing displays with VividHD-UV ink. And, with instant curing, your customers will appreciate the fast, durable results.

White Options

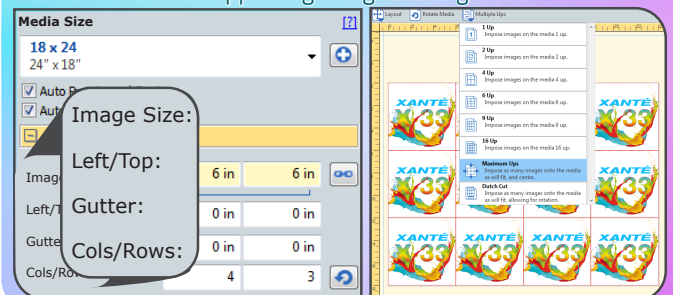
Build depth with layers of white



Edit Job Images



Imposition allows you to optimize your page layout by placing images in the maximum number of columns and rows while also supporting margins and gutters.





SPECIFICATIONS



PRINTING CAPABILITIES

Imaging area:	55" x 98" (139.7cm x 248cm)
Max. media size:	55" x 98" (139.7cm x 248cm)
Min. media size:	.5" x .5"
Max. print height:	3" (7.62cm)
Print colors:	CMYK + WWWW
Resolution:	720/1080/1440/2160/2880 DPI Resolutions
UV lamp:	Dual LED, low heat curing lamps

INK AND MEDIA

Ink type:	UV, 500 mL bottles per color The maximum shelf life is 1 (one) year from Date of Manufacture (DoM). Once opened, the shelf life is 2 (two) months or 1 (one) year from DoM, whichever comes first.
Media types:	PVC plastic, styrene, wood, aluminum, metal, acrylics, coroplast, ceramics, fabric, leather composites, paperboard, foamboard, glass, carpet, tile and more

PRINTER CONNECTIVITY

1-Gigabit Ethernet

PREPRESS SOFTWARE

Xanté iQueue Workflow:	Adobe® PostScript® 3™/PDF Workflow, Independent CMYK Density Control, Spot Color Matching, Imposition, Digital File Editing, Variable Printing, and much more
------------------------	---

WEIGHTS, DIMENSIONS

Dimensions:	127"L x 94"W x 49"H (323 x 239 x 125cm)
Net/Gross weight:	1166lbs (530kg)
Power supply:	110v or 220v 50-60hz

WORKING CONDITION

Operating temperature:	22-26 °C (68 °F - 78 °F)
Relative humidity:	35-75RH

XANTÉ



Adobe® PostScript® 3™



iQueue Simply Brilliant
Workflow (Included)

Digital Color Workflow with Advanced Color
Matching and File Management Tools



**Contact us for more information:
215-425-0300**

8.15.2024