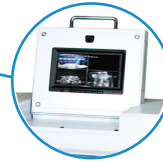


OnSite Shred at the Source!



Real-Time Monitoring & Recording: Ensures integrity of the shredding process



All-Metal Gears: Heavy duty steel gears for high performance and minimal noise



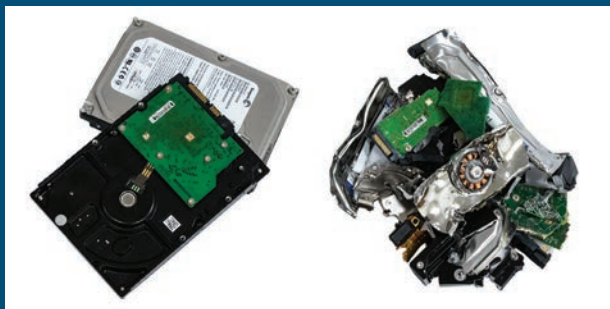
LED Control Panel: Easy to use with load indicator



Separate Shredding Chambers: Designed for continuous shredding of 3.5" HDDs and 2.5" HDD/SSDs

FD 87HDS-R

HDD / SSD HARD DRIVE SHREDDER WITH RECORDING SYSTEM



3.5" HDD Hard Drives



2.5" HDD & SSD Hard Drives



960 Brook Road, Unit 3
Conshohocken, PA 19428
(215) 425-0300

FORMAX[®]

www.formax.com

Physically Destroying Hard Drives is the Best Way to Keep Data Secure

The Formax **FD 87HDS-R HDD / SSD Hard Drive Shredder** provides the best level of security by physically destroying discarded hard drives. For optimal security and accountability, the FD 87HDS-R features a **Recording System with internal and external cameras** to monitor and document their destruction. **Separate shredding chambers** sized for 3.5" HDD and 2.5" SSD & HDD drives have sliding **metal shields for safety** and are designed for **continuous operation**. Its **chain-driven AC-gear motor** is housed in a **solid-metal cabinet with casters** for mobility and is engineered for low operational noise. Combining safety, durability, and an extra level of security, FD 87HDS-R is the best choice to protect your digital data.



User-Friendly Control Panel
Door Open Sensor, Reverse,
Waste Bin Full Indicator



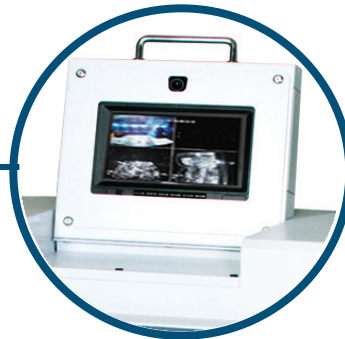
Commercial Grade
SSDs and HDDs are no match for the solid-steel blades and rugged chain-driven motor



Separate Shredding Chambers
Metal safety shields for safe, continuous operation, and individual LED counters



Rugged Waste Bin
Durable molded plastic for convenient collection of shredded particles



Recording System
Internal & external cameras monitor and document destruction on 64GB SD card

OPERATING FEATURES

- Separate Shredding Chambers
- Shreds 3.5" HDD and 2.5" HDD and SSDs
- Designed for Continuous Operation
- Internal and External Recording System
- LED Control Panel
- Fully Enclosed Chambers for Safety
- Heat-Treated Steel Cutting Blades
- Heavy Duty Chain-Driven AC-Geared Motor
- Resettable LED Counters
- All Metal Cabinet with Casters
- Front Access Waste Bin
- Large Emergency Stop Button
- Thermal Overload Protection
- Safety Key Lock

SUPPLIES

Cutting Head Lubricating Oil:
#8000-10, six 8-ounce bottles

WARRANTY

Cutting Head: 1 year warranty (parts only)
All other parts: 1 year warranty

SPECIFICATIONS

Infeed Opening for 3.5" HDD	4.72" (120mm)
Infeed for 2.5" HDD & SSD	3.54" (90mm)
Shred Particle Size for 3.5" HDD	1.6" (40mm) x random
Shred Particle Size for 2.5" HDD & SSD	.19" (5mm) x random
Infeed Capacity	Continuous, 1 drive at a time
Speed *	3-4 drives per minute
Dimensions	24" W x 34" D x 51" H (600 x 850 x 1290mm)
Security Level	H-4 (DIN 66399 Standard)
Weight	1,146 lbs (520kg)
Power	220V 20A 3-Phase NEMA Plug / Receptacle: L1520P / L1520R
Certifications	CSA approved

* Shredding speed and particle size vary based on media type and size