

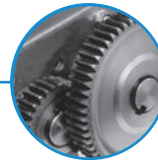


# OnSite

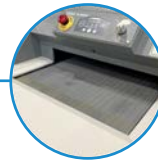
## Shred at the Source!



**LED Control Panel:** Load indicator to maximize efficiency and minimize jams



**Chain Driven Metal Gearing System:** Heavy duty steel gears for high performance



**Conveyor-Feed Shredding:** shreds entire files, stacks of forms, cardboard, and CD's



**Front Waste Bin Access:** Allows shredder to be placed against wall to maximize space

## FD 8906CC

### INDUSTRIAL CONVEYOR SHREDDER



- High capacity conveyor fed
- LED Control Panel
- Shreds entire files, stacks of forms, cardboard, CDs
- Front waste bin access
- Automatic internal blade oiling system

# FORMAX<sup>®</sup>

[www.formax.com](http://www.formax.com)



960 Brook Road, Unit 3  
 Conshohocken, PA 19428  
 (215) 425-0300

## Fully-automated commercial-grade power for high volume shredding ...

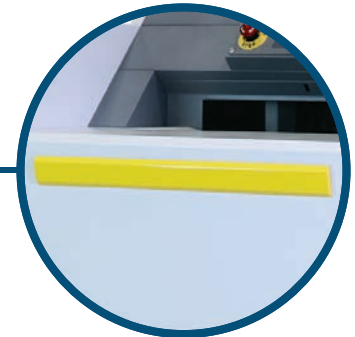
The **FD 8906CC** Industrial Conveyor Shredder is designed to shred stacks of computer forms, cardboard, CDs, and entire files **up to 650 sheets, at speeds of up to 35 fpm**. Standard features include an **LED Control Panel with load indicator, heat-treated solid-steel cutting blades, a powerful AC geared-motor, Auto Start/ Stop, Auto Reverse**, and a **variety of safety features**. **Shredding blades can also be customized** to meet your specific needs. The **front-access metal waste bin** allows the shredder to be placed against a wall to save valuable space. The standard **EvenFlow™ automatic oiling system** lubricates the cutting blades, keeping the FD 8906CC in peak operating condition.



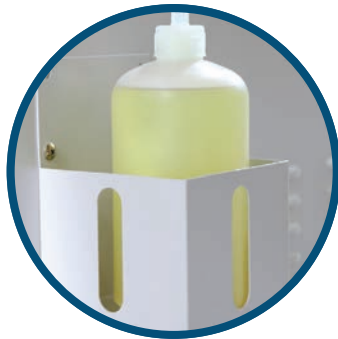
**User-Friendly Control Panel**  
Auto and Manual mode, Bin Full Indicator, Load Indicator



**Commercial Grade**  
Heat-treated steel cutting blades, all metal gears, and an AC geared motor



**Designed for Safety**  
Large stop bar, safety key lock, door open sensor, overload protection



**Internal Blade Oiling System**  
EvenFlow™ Automatic Oiling System lubricates blades for peak performance



**Front Access Waste Bin**  
Shredder can be placed against a wall to maximize space

### OPERATING FEATURES

- Belt-feed industrial shredding system
- LED control panel
- Front waste bin access
- Auto start/stop
- EvenFlow™ automatic oiling system
- Heat-treated solid-steel blades
- Chain-driven AC geared motor
- Auto reverse and cleaning
- Customizable shredding blades
- Waste bin full sensor
- Large safety bar and safety key lock
- Thermal overload protection
- Safety circuit breakers
- Rugged steel waste bin with casters

### SUPPLIES

- Cutting Head Lubricating Oil:  
#8000-20, four 1-gallon bottles
- Shredder Bags:  
Reusable heavy-duty nylon bags

### WARRANTY

- Cutting head: Lifetime limited warranty
- All other parts: 1 year warranty

### OPTIONS

- Output Conveyor Belt System: Rear conveyor belt transports shredded material to external waste bin
- Additional Steel Waste Bin

### SPECIFICATIONS

- |                                |  |
|--------------------------------|--|
| Cutting Style                  | Cross Cut*   |
| Shred Size                     | 5/16" x 1-1/2" - 3" (8 x 38 - 76mm)  |
| Sheet Capacity (70gsm)         | Up to 650 sheets**   |
| Speed                          | Up to 35 fpm (10m)   |
| Feed Opening                   | 21" (53cm)   |
| Dimensions                     | 47" W x 81" L x 63" H  |
| Dimensions w/Optional Conveyor | 47" W x 125.5" L x 63" H (119 x 319 x 160cm)   |
| Bin Capacity                   | 102 gal (386l)   |
| Weight                         | 1,984 lbs (900kg)  |
| Security Level                 | P-3  |
| Delivery Requirements          | Customer-supplied fork lift is required for installation   |
| Power Supply                   | 3-phase 220V, 60Hz, 50A dedicated line required<br>NEMA CS8366 plug included<br>CS8369 receptacle required |

\* Custom blades available for special purpose, size, and applications  
\*\* Sheet capacity may vary due to variations in paper and power supply